

discover **NEO•EII**

Electric
Injection Molding
Machine



Tederic Machinery Co., Ltd.
No.245 Wenzhe North Road,
Hangzhou City, Zhejiang Province, 310018, China
T. +86-571-86733387
www.tedericglobal.com

t.NEO.202305.11

tederic
SMART INJECTION

Design
drives
change.



About Us



Basic Facts & Figures



An international partner with solid background in the industry - based on trust and industry experience.

Tederic is a smart injection molding machine manufacturer with world-leading technology (a world-renowned injection molding machine solution provider). As a company listed on the Shanghai stock exchange of China (603289-SH), we have rich industry experience, good performance and professional knowledge, with the mission of creating real value for customers, the goal of pursuing excellence, adhering to a flexible approach and the spirit of continuous innovation, we will create high-quality, durable, efficient and value-added products for you.

Tederic has the core technology of injection molding machine and the manufacturing capacity of main parts,

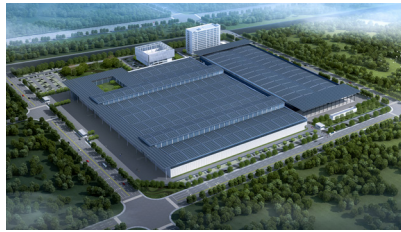
from casting casting, fuselage and sheet metal welding, precision machining to complete machine assembly, all through strict quality system control, and can achieve fast delivery for customers.

At present, Tederic has 122 technical patents and more than 70 industry experts. In terms of talent development and reserve, Tederic has carried out comprehensive and in-depth industry-university-research cooperation with 15 universities, including Zhejiang University, Beijing University of Chemical Technology, Zhejiang University of Technology, etc. Moreover, Tederic has donated \$150 million to cultivate the elite of the plastic machinery industry and promote the sustainable development of the industry.



Tederic Machinery Co., Ltd.
Covering 50,000 square meters

Founded in 2008



Zhejiang Tederic Equipment Co., Ltd.
Covering 164,674.5 square meters

Coming soon



Zhejiang Tederic Heavy Machinery Co., Ltd.
Covering 60,000 square meters

Founded in 2010



Smart Factory of Tederic New Headquarters
Covering 33,334 square meters

Coming soon

Timeline

2003

Founded as a family owned company, based in Hangzhou city, busienss mainly in oversea market.
Start with first machine series "TRX".

2010

Development of the whole industrial chain

The second series "DREAM" was born to complete the layout of the whole product line

2018

Portugal's overseas subsidiary was established and started to lay out global business outlets

2020

"4.0 concept smart headquarter" has officially started.

Covers an area of 33,333+ m²

2022

Increase production capacity layout, "Integrated Molding super factory" project started, with an area of 178,000 m²

Entered a new stage of high-quality, sustainable and globalized development

2008

Headquarters was established in Xiasha, covering an area of 50,000+ m²

2017

2017 Oct 31th, Tederic become the only Chinese injection molding machine brand listed on the shanghai main board stock market in the industry and developed toward collectivized enterprises

2019

Three overseas subsidiaries in Korea, Mexico and Brazil have been established

2021

Annual production capacity of 10,000 units

The third generation product line "NEO" was released

Set up a German R&D center

We are a global partner

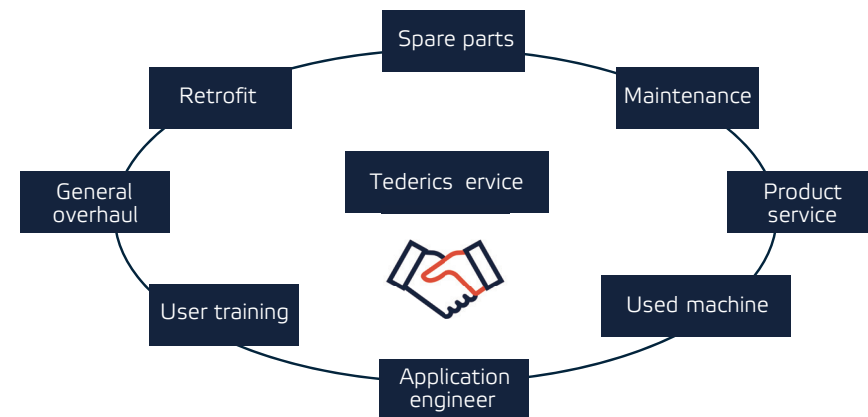
So far, Tederic machines have been in operation in more than 130 countries and regions.

At present, Tederic has 4 overseas subsidiaries and 36 sales and services networks in the world.



Support and service

360° customer care



- Perfect service management system

So far, Tederic sales engineers have provided initial installation or subsequent commissioning services to customers in more than 130 countries and regions around the world.

- Rich experience in sales and service industry

70% of the engineers have more than ten years of industry experience

- Global service rapid response

At present, Tederic has 65 sales and services networks in the world.



We are there for you a whole machine life cycle:

1. Personal contact
2. Consultation already in the initial phase
3. Professional Installation and commissioning
4. Preventive maintenance
5. Repairs
6. Spare parts supply by us
7. Training courses at our technical center in Munich or at your site
8. Support by special loading/unloading and assembly companies who are familiar with injection molding machines
9. Retrofitting and modernization

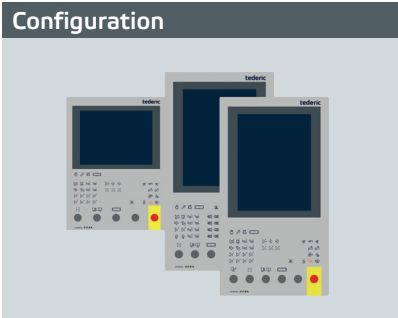
NEO

Design drives change, evolution, usability and functionality

NEO series is jointly created by the top design team in the world and tederic team, which embodies 20 years of technical accumulation of tederic and also fully displays the industrial aesthetics. It combined perfectly the world's leading industrial design, high-end components and advanced design concept, which brings a better user experience.

Controller

- Professional controllers, has dozens of years experience accumulated.
- Multiple dimension of screen available from 12 to 21 inches.
- Screen available by key screen and touch screen, optional of high-end multi-touch screen. Support for multiple data interface protocol, like OPC UA, Modbus.
- Massive amounts of mold process data & production process data.
- Open programming, enable to develop secondary programs, to meet a variety of special process requirements.



Safety Standard



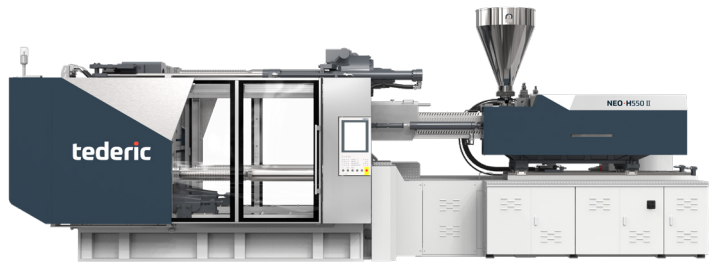
Supported Languages



NEO • T



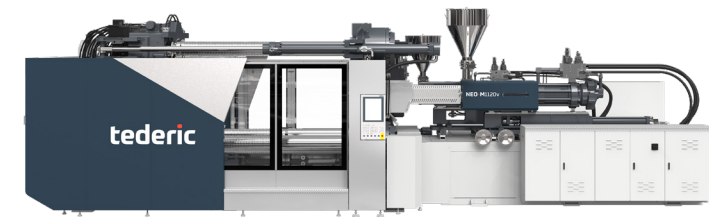
NEO • HII



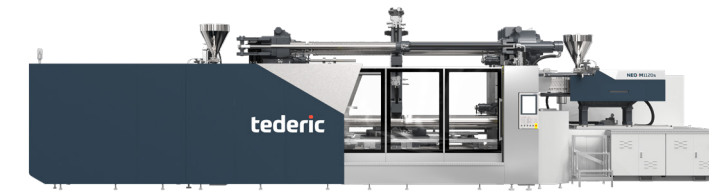
NEO • EII



NEO • Mv



NEO • Ms



NEO • EII

Electric IMM

NEO-EII has superb electric technology and rich application experience. Equipped with advanced energy recovery system as standard, which can save 15% of energy compared with other electric machine.

And according to the euromap 60.1 energy consumption standard, all NEO-E models are above 9+.

NEO • EII Electric IMM Clamping force: 60t–1400t
Precision, Efficient, Energy-saving, Clean

Main application sectors



Automotive



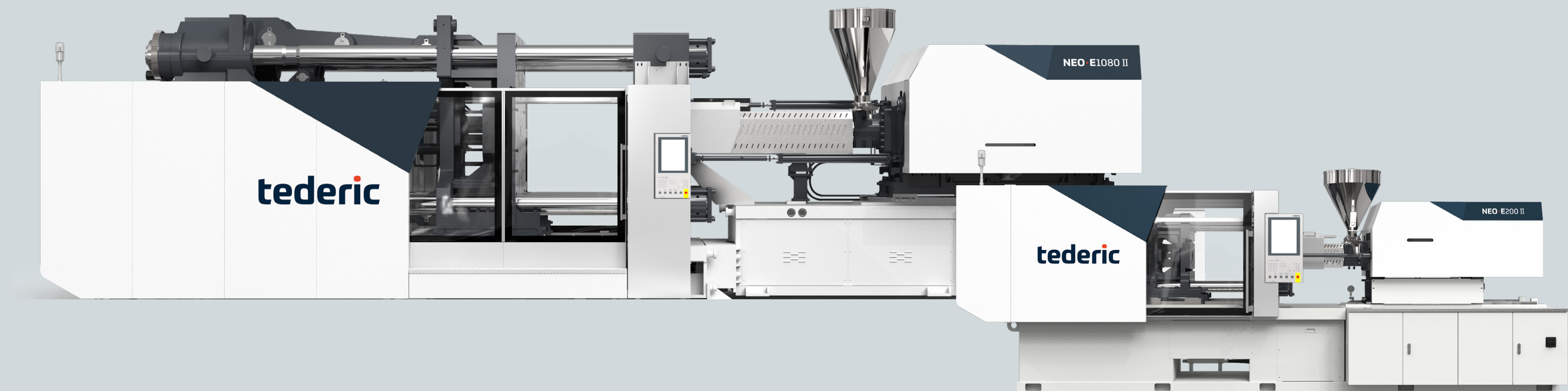
Electronic



Medical



Packaging

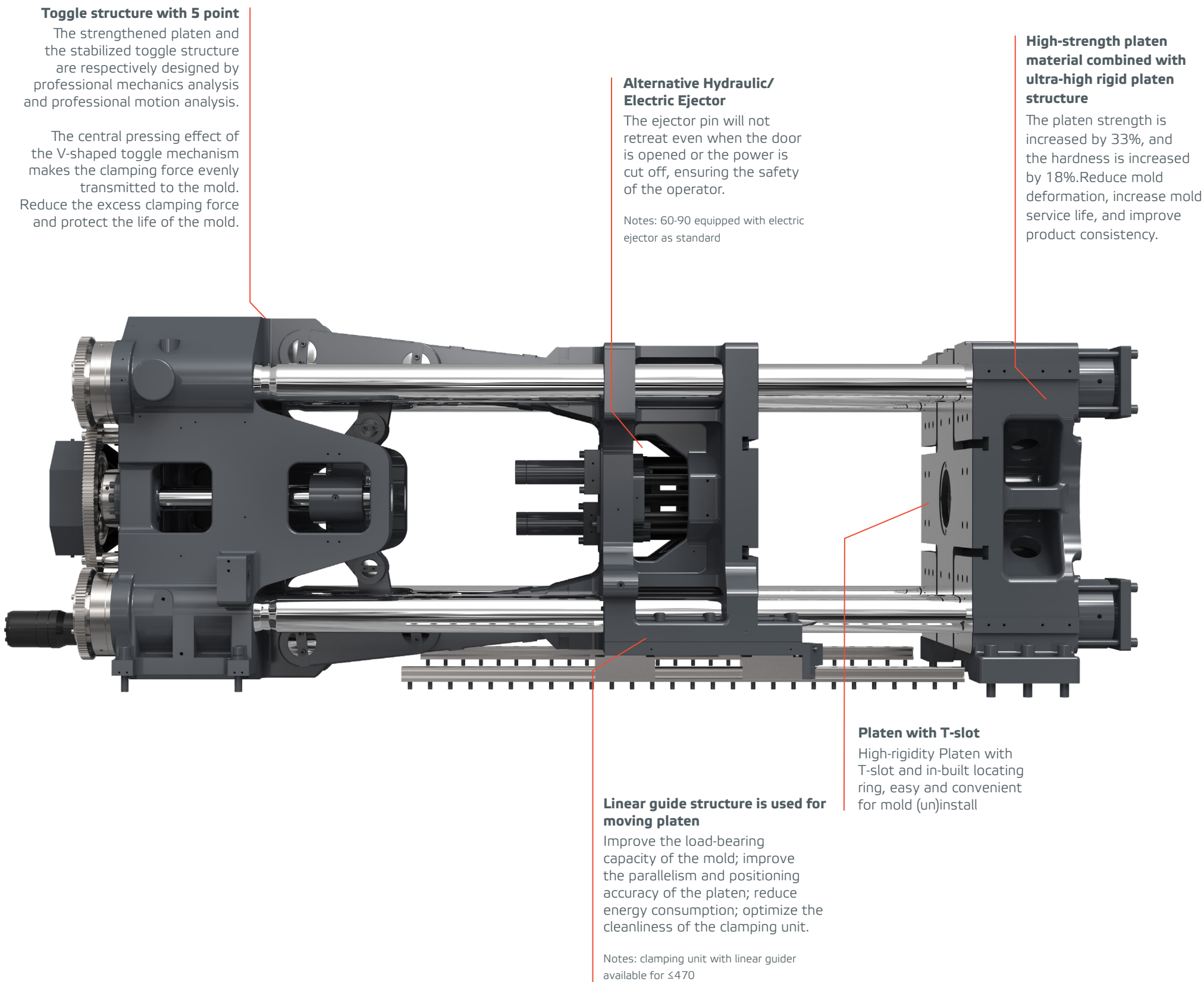


NEO • EII

Clamping Unit

Technical Advantages

- Precision controlled by servo motor, repetitive positioning accuracy of mold opening position is up to 0.01mm
- No lubrication of tie bar, optimizing the cleanliness of the clamping unit
- Huge mold capacity to achieve cross-level benchmarking of parameters

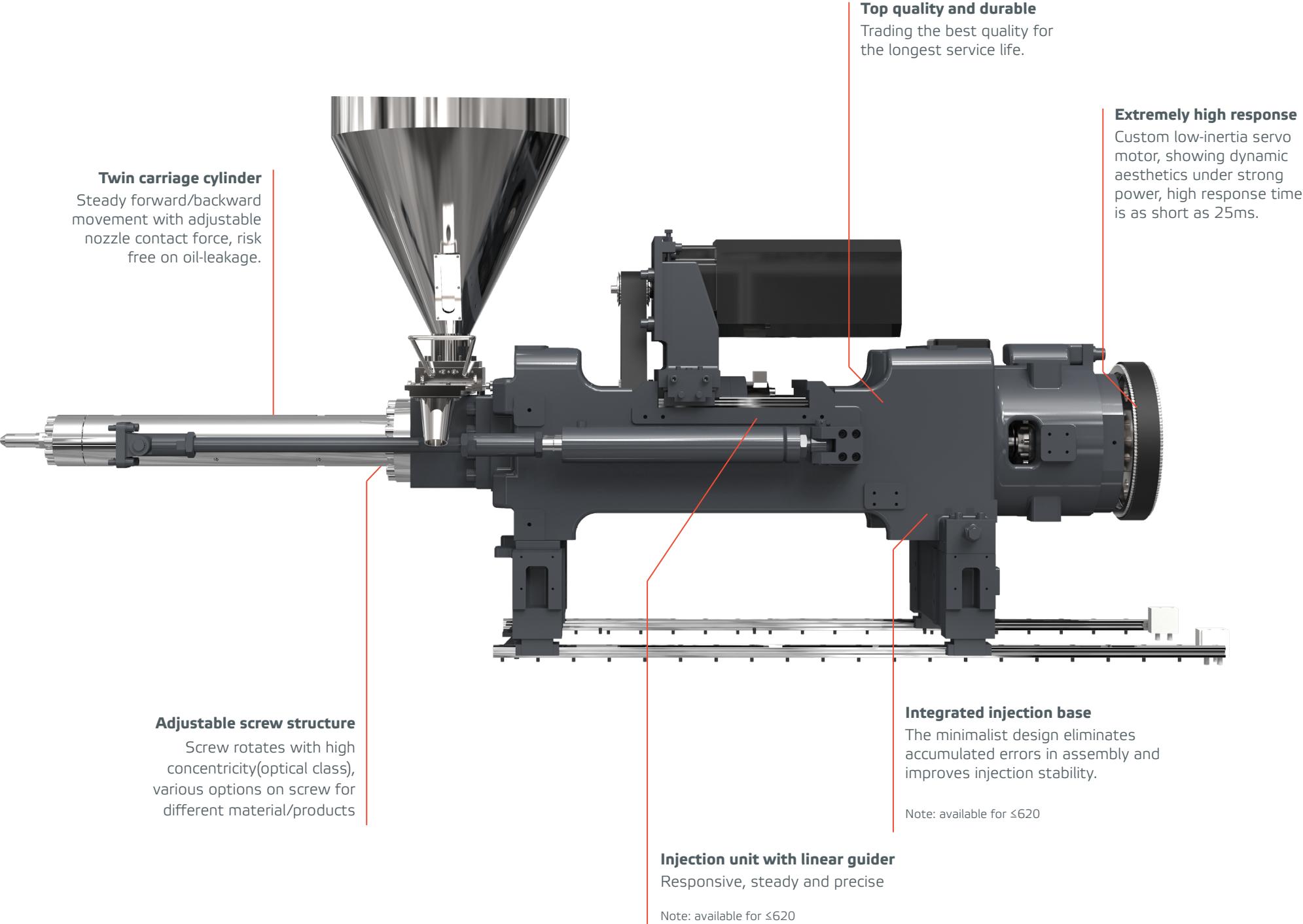


NEO • EII

Injection Unit

Technical Advantages

- Pressure control accuracy is up to ± 1 bar, which can achieve 0.1% repeated precision of product quality
- Multiple injection speeds are available, up to 500mm/s
- Excellent low-speed characteristics, smooth injection below 1mm/s



NEO • EII

Electric IMM

Technical Advantages

- Dry cycle time reduce upto 26%
- Specialized all electric control system
- Modular electric cabinet
- Integrated hydraulic package
- Stack driver units



Full motor professional control

Upgraded control system with 15"touch screen(12" for 60-120) , better Human-Machine Interaction experience

Movable safety door
Convenient for machine maintenance

Mold ejector pins return confirmation interface
It is absolutely safe to protect the mold.

Modular electric control cabinet design
Energy Recovery System, Euromap9+ power saving standard
Electric cabinet EMC design (non-interference. Stable and easy maintenance)

